



KANSAS GEOLOGICAL SOCIETY

BULLETIN

Volume 93 Number 2

March - April 2018

Established 1925

IN THIS ISSUE

Memorial for Walter H. Martz Jr.

page 9

Photos from the Annual KGS Banquet and Awards Program

page 10





THE TOTAL PACKAGE

www.dawson3d.com



MIDLAND 432-684-3000 | HOUSTON 713-917-6772
OKLAHOMA CITY 405-848-7512 | DENVER 303-723-0440
PLANO 972-881-1099 | CALGARY 403-263-7770



THE RIGHT CHOICE FOR SEISMIC



SERCEL UNITE & INOVA HAWK CABLE-LESS SYSTEMS

CENTRALLY OWNED & OPERATED IN WICHITA, KS

AHV-IV COMMANDER 362/364 VIBS

HSE MANAGEMENT PROGRAM

SAFETY & QUALITY ORIENTED

PERMITTING SERVICES

3500 N. Rock Rd. Bldg. 800 Wichita, KS 67226

Phone: (316) 636-5552 Fax: (316) 636-5572 Website: www.paragongeo.com

Use Your KGS Library For All Your Printing Needs

Old photos?
Old documents?
We can scan them for you!

Robert F. Walters Digital Library

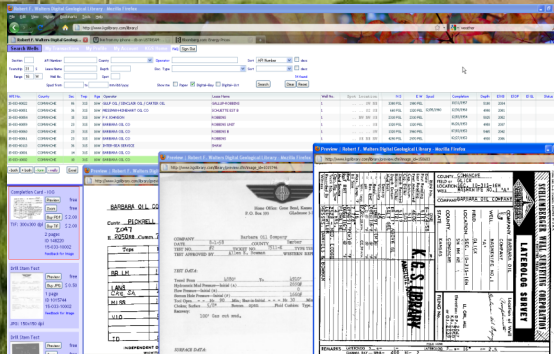
The most complete source for Kansas data

Database updated nightly

Day or Night
You can get to the data as you need it

www.kgslibrary.com

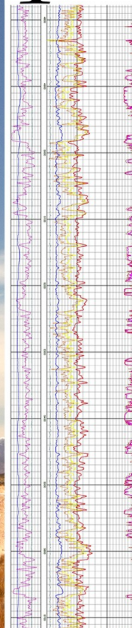
To Join: call 316-265-8676



Celebrating
40 years of
excellence

EVERYTHING WELL LOGS Rasters • LAS

We've got you covered!



Over 6 million
North American well logs

1-800-310-6451

WWW.MJLOGS.COM

Table of Contents


Features

Memorial for Walter Martz	9
KGS Annual Banquet Photos	10

Departments & Columns:

KGS Tech Talks	4
President's Letter	7
Advertiser's Directory	8
Professional Directory	15
Kansas Geological Foundation Cornerstone	18
Exploration Highlights	21 & 22
Kansas Geological Foundation Memorials	23

ON THE COVER:



***“Baby bridge” - Aruba
Exposed carbonate reef
Larger adjacent bridge collapsed in recent years***

CALL FOR PAPERS

The Kansas Geological Society Bulletin, which is published bimonthly both in hard-copy and electronic format, seeks short papers dealing with any aspect of Kansas geology, including petroleum geology, studies of producing oil or gas fields, and outcrop or conceptual studies. Maximum printed length of papers is 5 pages as they appear in the Bulletin, including text, references, figures and/or tables, and figure/table captions. Inquiries regarding manuscripts should be sent to manager@kgslibrary.com or mailed to 212 N. Market, Ste. 100, Wichita, KS 67202. Specific guidelines for manuscript submission appear in each issue of the Bulletin, which can also be accessed on-line at the Kansas Geological Society web site at <http://www.kgslibrary.com>

SOCIETY Technical Meetings

KGS 2018 Technical Talks

March 06 - "*Alternate Sources of Energy*" - Dr William H. Wentz, Jr. - WSU College of Engineering

March 20 - Film Presentation - TBD

April 3 - Film Presentation - TBD

April 17 - Film Presentation - TBD

Please remember to check the website for the most up to date information on Technical Talks
<http://www.kgslibrary.com/techtalks.cfm>

*Tech Talks are held at Landmark Square
212 N. Market—4th floor
In the Wisdom Center*



Note: For those geologists who need 30 points to renew their licenses, there will be a sign-in sheet at each presentation and also a certificate of attendance.

KANSAS GEOLOGICAL SOCIETY



BOARD OF DIRECTORS

PRESIDENT

Beth Isern

PRESIDENT-ELECT

Wesley Hansen

SECRETARY

Aaron Young

TREASURER

Ken Dean

DIRECTORS

Paul Ramondetta
Rocky Milford
Ryan Dixon

ADVISORS

Tim Hellman
Debbie Fitzgerald

COMMITTEE CHAIRMEN

Advertising

Kent Scribner

Advisory

Tim Hellman

Annual Banquet

Doug Davis

Bulletin

Wesley Hansen

Continuing Education

Dave Clothier

Distinguished Awards

Paul Ramondetta

Environmental

Kent Matson

Field Trip

Jerry Honas

Fishing Tournament

Randy Teeter

Future Plans

Golf

Dave Barker

Historian

Larry Skelton

Library

Ted Jochems

Membership

Larry Friend

Nomenclature

John H. Morrison, III

Picnic

Beth Isern

Public Relations

Shooting Tournament

Larry Richardson

Technical Programs

Dave Clothier

Technical Editor

Ernie Morrison

Finance Committee

Rocky Milford, Chairman

Members: Tim Hellman, Chuck Brewer, David Doyel, and Tom Funk

A.A.P.G. DELEGATES

Ernie Morrison Douglas Davis
2018 2018

BULLETIN STAFF

EDITORS

Wes Hansen (316) 772-6188
Ernie Morrison (Technical Editor) (316) 788-1150

ADVERTISING

Kent Scribner
Stelbar Oil Corp. (316) 264-8378

PROFILES/MEMORIALS

Robert Cowdery

EXPLORATION HIGHLIGHTS

John H. Morrison, III
Independent O&G (316) 263-8281

STATE SURVEY

KS Geological Survey (785) 864-3965

SOCIETY NEWS

KGS Library (316) 265-8676

MANAGER

Tammy Nichols-interim manager (316) 265-8676

EDITOR EMERITUS

Wes Hansen (316) 772-6188
Larry Richardson (316) 262-8427

K.G.S. LIBRARY

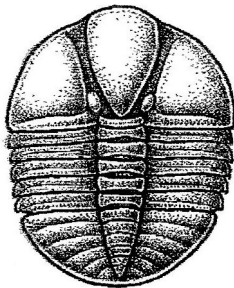
PHONE 316-265-8676 FAX 316-265-1013
email: frontdesk@kgslibrary.com or
Web: www.kgslibrary.com

The KGS *Bulletin* is published bi-monthly by the Kansas Geological Society, with offices at 212 North Market, Wichita, Kansas 67202 Copyright 2016, The Kansas Geological Society. The purpose of the *Bulletin* is to keep members informed of the activities of the Society and to encourage the exchange and dissemination of technical information related to the Geological profession. Subscription to the *Bulletin* is by membership in the Kansas Geological Society. Limited permission is hereby given by the KGS to photocopy any material appearing in the KGS *BULLETIN* for the non-commercial purpose of scientific or educational advancement. The KGS, a scientific society, neither adopts nor supports positions of advocacy, we provide this and other forums for the presentation of diverse opinions and positions. Opinions presented in these publications do not reflect official positions of the Society.



Twenty-two Trucks Serving
Kansas—Colorado—Texas—Nebraska—Illinois

DST's
Back Pressure testing (G1 & G2)
Slick line services using the same Weatherford
Electronic Pressure Gauges used on DST's



1-800-728-5369

FAX 1-785-625-5620

www.trilobitetesting.com
trilobite@eaglecom.net

SHOPS LOCATED IN:

Hays, KS
Scott City, KS
Pratt, KS
Hugoton, KS
Oberlin, KS
Clay City, IL

CAN YOU NAME THE CRITTER?

Sponsored by Trilobite Testing, Inc.

Is your paleo up to date?

If you know the name of the trilobite,
submit your guess via e-mail to
manager@kgslibrary.com

Remember that *Trilobite Testing* is
sponsoring your efforts, so be sure to thank
Paul Simpson the next time you see him.

CONGRATULATIONS!!

**Randy Lilak correctly identified
The last one as: Harpides**

Bulletin committee members and PhD's in
Paleontology are prohibited from entering.



Kansas Geological Society (KGS) Medallion for Scientific Distinction and Excellence

The Kansas Geological Society (KGS) Medallion for Scientific Distinction and Excellence may be given annually for peer-recognized, sustained significant scientific contributions to all facets of applied Kansas geology, including work either in Kansas or in surrounding states if the latter contributions pertain directly and significantly to Kansas geology. No more than one award may be given each year, an award does not have to be given every year, and members of the KGS Awards Committee that handle nominations for this award cannot nominate themselves for this award. The candidates need not be active KGS members, and they must be living at the time of selection. The primary consideration in the selection of a candidate shall be his or her sustained, published, significant contributions to any facet of Kansas geology. Contributions may be varied in form such as development of geologic concepts, advancement in discovery thinking, and recognized leadership in exploration concepts. Oral and/or written publications in peer-reviewed geological venues is a requisite criterion for any candidate for this award. The name of a candidate shall be presented by the Awards Committee to the KGS Board of Directors for their approval. Once approved, the recipient shall be presented an appropriate award in the form of a medallion or plaque recommended by the Awards Committee and approved by the Board of Directors at the annual business meeting of the society. This is a new award given by the KGS for distinction and achievement in Geological research in Kansas.

Awards Committee members are Sal Mazzullo, Mike Dealy and Alfred James.

President's Letter

Society and Library Members,

It appears as if life in the oil business has a more positive outlook early in 2018. WTI oil prices are up approximately \$7.50 from a year ago and have seemed to somewhat stabilize – at least momentarily. Rig count is slightly up from a year ago, as well. Those that attended NAPE this year reported that the atmosphere in Houston also had a positive vibe. All in all, good news for early 2018.

The Annual Banquet was well attended this year. It was a very nice evening, with good food and company. I would like to thank Doug Davis once again for organizing this event and all of those that assisted him, the Petroleum Club for the perfect venue and the KGS members that attended. It was especially moving to see Dr. Lynn Watney accept his Kansas Geological Society Medalion for Scientific Distinction and Excellence.

A Finance Committee was formed in late 2017 to help review and advise the current Board and successive Boards regarding investments, monitor KGS Financials and to provide the KGS Board of possible additional investments. This is a long-term committee dedicated to providing future KGS Boards some continuity with financial decisions.

The Kansas Geological Foundation is on the verge of acquiring 35+ file cabinets of older electrical logs from both western and eastern Kansas from Pioneer Logging out of Hays, KS. Ted Jochems has worked tirelessly on this project, and feels that by getting these logs, will add numerous amounts of data and information that the KGS library does not have. Please consider donating to the Kansas Geological Foundation to help with the upcoming monumental task of integrating. Contact Larry Richardson, KGF President, with questions.

Spring is right around the corner. AAPG Annual Convention is being held this year in Salt Lake City, May 20-23. I have spoken to several KGS members that are planning on attending. There are numerous field trips being offered that any geologist would love. With spring comes the beginning of the many KGS social events. Consider attending one or all. The committees work hard to plan these events, and with good turnouts, the KGS can even make some money while having some fun.

Thank you again for your support to the KGS. As always, contact me or any of the Board members with questions or ideas.

Beth Isern



Kansas State University
DEPARTMENT OF GEOLOGY

Graduate education for active professionals in this innovative program, workshops, site visits and distance courses help professionals advance in their careers. Whether your goal is to receive academic credit, certifications or a master's degree in geology, you'll find a path that leads to your career goals.

CHOOSE FROM SPECIALIZATIONS IN:

- ▶ Petroleum geology
- ▶ Environmental geochemistry
- ▶ Structural Geology
- ▶ Groundwater
- ▶ Exploration geophysics
- ▶ Geomicrobiology

LEARN MORE

Contact Pamela Kempton, department head, for more information at pkempton@k-state.edu. Or contact any of our program partners to learn more.

*K-State Global Campus: dce.k-state.edu
 Geology department: k-state.edu/geology
 Graduate School: k-state.edu/grad*



ADVERTISER'S DIRECTORY

	<i>page</i>
Allied Cementing Company, Inc	20
Dawson Geophysical Company	2
Duke Drilling	20
GeoSteering	14
Kansas Geological Foundation	17
Kansas State University	8
Lockhart Geophysical	20
MJ Systems	2
Murfin Drilling Company, Inc	20
PARAGON Geophysical Services, Inc	2
Professional Directory	15
Trilobite Testing	6
Walters Digital Library	13
Well Enhancement Services, LLC	14

Log in to
 Walters Digital Library
 At
www.kgslibrary.com

Log in as our guest
 and see the Society's Database
 A convenient way to see what
 you might want to order!
 Call or email your order to:
 316-265-8676
frontdesk@kgslibrary.com

ADVERTISER'S RATES: 2017

Full Page	B&W	Color
6 issues	\$2,000	\$2,500
3 issues	\$1,080	\$1,325
1 issue	\$480	\$525
1/2 Page		
6 issues	\$1,000	\$1,500
3 issues	\$540	\$825
1 issue	\$225	\$350
1/4 Page		
6 issues	\$600	\$900
3 issues	\$325	\$525
1 issue	\$150	\$250
1/8 Page		
6 issues	\$300	\$500
3 issues	\$175	\$325
1 issue	\$75	\$185
Professional Ad (Business Card)		
6 issues	\$90	\$180

For one-time ads, call Kent Scribner at 316-264-8378

Memorial

Walter H. Martz Jr., retired independent petroleum geologist, rose to heaven on January 12, 2018. He was born on June 19, 1927 (the greatest year, he often recalled) in Independence, MO to Walter Sr. and Elizabeth (Dulaney) Martz. The family moved to Hutchinson, KS where he attended Hutchinson High School. He joined the US Navy and played baritone in the Navy Band. He returned home to Hutch where he attended JUCO. It is there where he met his farm girl love, Joan May of Haven, KS. The newlyweds moved to Golden, CO where Walter graduated from the Colorado School of Mines. Together they lovingly nurtured 4 children. His many and varied interests included golf, playing the harmonica and guitar, and making personalized paper airplanes and gifting them to his many special friends. He was preceded in death by his parents and sister, Lucille, wife Joan and daughter Jennifer. He is survived by his sons Steve (Anita), Tim (Cathy), and David (Sue); 8 grandchildren and 14 great grandchildren. Memorials are to the Woodland United Methodist Church in Wichita and the Kansas Geological Foundation, 212 N. Market, Suite 100, Wichita, KS 67202.

EDITORS NOTE: My apology for this brief tribute to Walter. It was retyped from his obituary in the Wichita Eagle. I did not see Walter at the Landmark Square Building (home to the KGS) all that often in the past several years, but consider him to be one of the truly good ones.

Robert F. Walters Digital Library

Log in as our Guest

username: guest

password: guest

316-265-8676



**Let Us Print Your Geo Reports
And Save Your Time For Finding More Oil & Gas
Top Quality Color Printing For Our Membership**

Email your files to: kgsorders@gmail.com

2018 KGS Banquet Photos



Dr. Lynn Watney speaking after receiving the First KGS Medallion for Scientific Distinction and Excellence Award presented by past KGS President, Paul Ramondetta



2018 KGS Banquet Photos

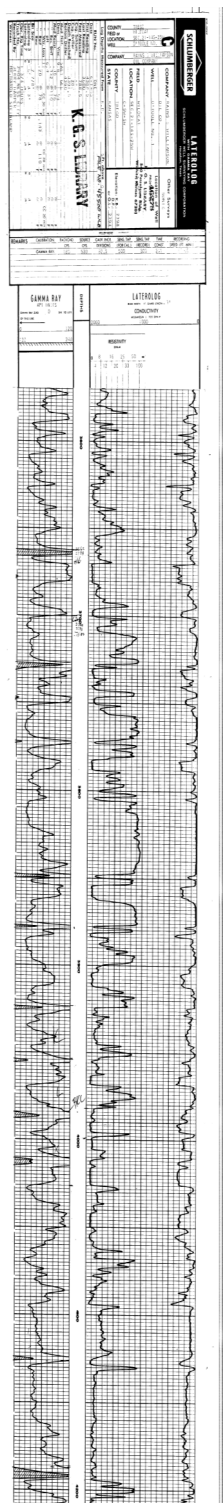


MC David Clothier presented Janice Bright her award for 34 years of service to the KGS and KGF



Outgoing President, Paul Ramondetta with his rock hammer joined by the past KGS presidents in attendance.

*The KGS Library is pleased to
announce a new service*



Creating
LAS files
from our logs
or yours

**\$20.00 per
curve!!**

Quick
turn-around

Send us your log file
or tell us which of
ours you would like
converted.

316-265-8676

The Kansas Geological Society maintains its ownership
and copyright when converting library log files to LAS

**We Invite You
To join**

***Kansas
Geological
Foundation***

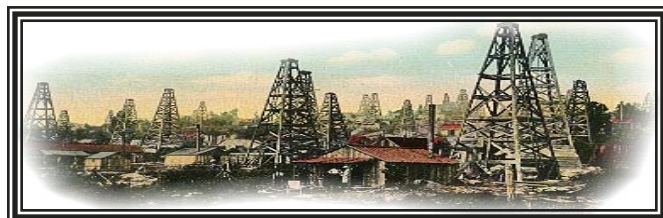
*\$50.00 membership is
tax deductible*

Call 316-265-8676

*Or send checks to:
Kansas Geological Foundation
212 N. Market, Ste. 100
Wichita, KS 67202*

BULLETIN CONTENT POLICY

Effective January 1, 2018, only ads for service companies and geologists offering their services will be permitted in the KGS Bulletin. Furthermore, only content of geologic interest or official KGS functions (technical talks, annual banquet, golf tourney, picnic etc.) will be permitted in this bulletin. This policy is in keeping with maintaining a professional standard for this publication. Any interpretation of this policy rests solely with the editor of this bulletin.



UNIVERSITY OF KANSAS STATE OF KANSAS
 Franklin D. Murphy, M.D., Chancellor George Docking, Governor

MINERAL INDUSTRIES COUNCIL
 R. O. Weaver ('77), Chairman Brian O'Brien ('79), Vice-Chairman
 R. A. Spencer ('77) E. J. Jurgensen ('75)
 W. L. Stryker ('77) George K. Mackin, Jr. ('79)
 Howard Casey ('81) Charles Cook ('60)
 Simon S. Clarke ('81) Dave Hansen ('60)
 Lee H. Cornell ('81) Joe E. Donham ('60)

STATE GEOLOGICAL SURVEY
 Frank C. Foley, Ph.D., State Geologist and Director
 William W. Hamblen, Ph.D., Assistant State Geologist
 and Assistant Director
 Raymond C. Moore, Ph.D., S.D., Principal Geologist

STATE BOARD OF REGENTS
 A. W. Hensberger, Chairman
 Merrill Boyd
 Claude C. Bralby
 Ray Evans
 Clement H. Hill
 Mrs. Leo Hughey
 Lawrence Morgan
 Oleta Stadler
 Harry Valentine

THE SURFACE FEATURES OF KANSAS

By RAYMOND C. MOORE

Get Your Maps copied at the KGS library
We can scan, copy, and print up to 44" wide
Color or Black & White
Solid Color @ \$4.00/sq. ft.
Line maps with color @ \$3.00/sq. ft.

AAPG Section Meeting Updates

Southwest April 7-10 El Paso, TX
 Pacific April 22-25 Bakersfield, CA
 Rocky Mountain May 20-22 Salt Lake City, UT
 Gulf Coast Sept. 30-Oct. 2 Shreveport, LA
 Eastern Oct. 7-11 Pittsburg, PA

AAPG ACE 2018

Salt Lake City, Utah

May 20-23, 2018

Robert F. Walters Digital Library

The most complete source for Kansas data
Database updated nightly

Day or Night
You can get to the data as you need it

www.kgslibrary.com
To Join: call 316-265-8676

WOULD YOU LIKE TO INCREASE YOUR PRODUCTION AT A FRACTION OF THE COST OF HORIZONTAL DRILLING?



Well Enhancement Services, LLC is jetting laterals utilizing new technology and coiled tubing. We now have the ability to place hundreds of gallons of acid hundreds of feet away from the well bore. This allows us to not only enhance existing production but to produce reserves previously unreachable. It has established itself by repeatedly increasing production in both new and existing wells. Contact us for more information, questions or to schedule your next well with **WES**.



Please Contact Us:

Phone: (785) 625-5155
 Fax: (785) 625-4151
 Field: (785) 259-4638

wesofhays@hotmail.com
 Box 87, Schoenchen, KS 67667

“Tap into success....with WES”

www.**GeoSteering**.com

281-573-0500
 info@geosteering.com

Free introductory consultation with modeling: let us demonstrate whether images or propagation resistivity could add value to your well.

Personnel with degrees & 20+ years of oilfield experience

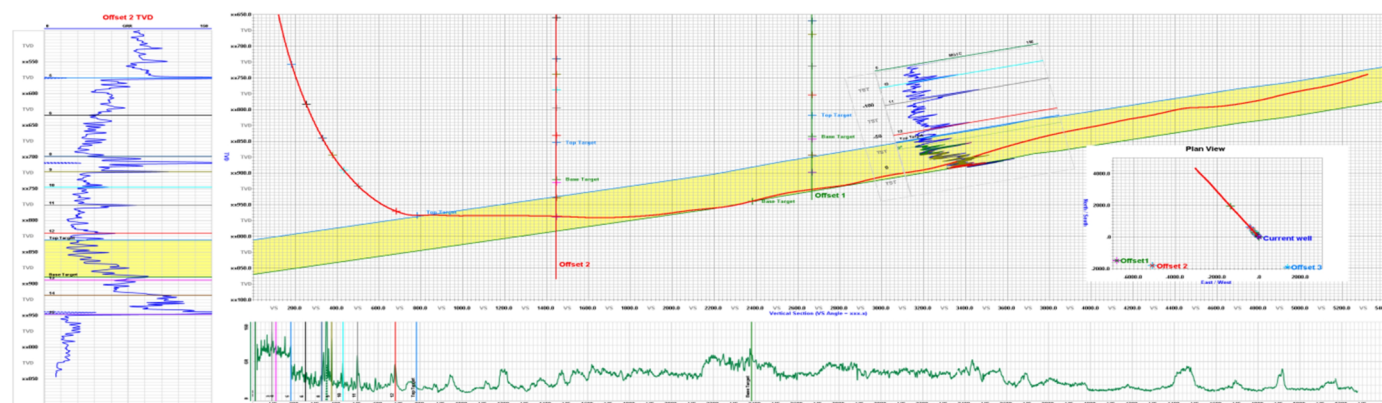
Proprietary software

TST interpretation for GR only jobs

Image displays / interpretation for jobs with azimuthal GR, resistivity or density

Resistivity modelling / interpretation for jobs with LWD propagation resistivity

Real-time (always)



PROFESSIONAL DIRECTORY


Kirk Rundle
Consulting Geophysicist
 3D Seismic Design, Acquisition to Processing QC.,
 Interpretation and Analysis, Subsurface Integration
 7340 W. 21st. N., Ste. 100
 Wichita, Kansas 67205
 Office: 316-721-1421 Fax: 316-721-1843
 Email: kirk@rundlegeo.com

ROGER L. MARTIN
Independent Petroleum Geologist
 200 E 1st St, Ste 405, Wichita, KS 67202
 Cell: 316-833-2722 Office: 316-250-6970
 KS Field Cell: 316-655-1227
 Fax: 316-425-3829
 Email: rogermartingeo@yahoo.com

Covey *The Well Watchers*
"One Thousand Wells and Counting"

Curtis E. Covey Wellsite Petroleum Geologist
 Gas Trailer Cell: 316-217-4679 Office: 316-776-0367
 Email: wellsitgeol@gmail.com 6548 Bedford Circle
 Derby, Kansas 67037
Gas Detection Trailer & Internet/Phone Communications


ALFRED JAMES III
Petroleum Geologist
 Kansas - Colorado - Utah
 4912 E. 29th St. N., Ste. 3, Wichita, Kansas 67220
 SIPES # 1111
 Office (316) 267-7592
 james.alfred21@yahoo.com



Banks Resources
Scott Banks
 Petroleum Geologist
 banksb@aol.com
 Cell: 316.253.8550
 1700 N. Waterfront Pkwy.
 Bldg. 300 • Suite C
 Wichita, KS 67206
 Phone: 316.558.5262
 Fax: 316.558.5263

M. (Brad)ford Rine, Geologist

Licensed, Registered, Certified
 PROSPECT EVALUATION PROSPECT ORIENTATION
 WELLSITE SUPERVISION DRLG/COMPL CONSULTATION
 RESERVOIR STUDIES PROPERTY EVALUATION
 EXPERT TESTIMONY BANJO PICKER
 100 South Main Suite #415
 Wichita, Kansas 67202 Email: rinemb@sbcglobal.net
 Office & Cell: (316) 250-5941

WESLEY D. HANSEN
Consulting Geologist
 Well site Supervision • Geologic Studies
 212 N. Market, Ste 257
 Wichita, Kansas 67202
 Office/Mobile: (316) 772-6188
 whansen4651@sbcglobal.net
 37 Continuous Years in the Kansas Oil Patch


DeGood Geological Services
 Alan DeGood
 Kansas Licensed Geologist #330
 1233 Autumn Drive
 Goddard, KS 67052
 Phone: 620-242-6301
 Home: 316-794-8391
 Email: degood1@live.com
 Prospect Reviews
 Reserve Studies
 Rendition Preparation


KEVIN L. KESSLER
 INDEPENDENT/CONSULTING PETROLEUM GEOLOGIST
 WELLSITE SUPERVISION • GEOLOGIC RESEARCH
 OIL & GAS PROSPECTS
 KANSAS & EASTERN COLORADO
 MAILING ADDRESS PHONE
 1199 N. PONDEROSA RD. RES.: (316) 522-7338
 BELLE PLAINE, KS 67013 MOBILE: (316) 706-6636
 EMAIL: KKESSLER1199@AOL.COM

MELLAND ENGINEERING, INC.
Petroleum Engineering & Geological Consulting
James E. Melland, P.E., P.G.
 President
 Office: (620) 241-4621 Fax: (620) 241-2621
 jamesm@mellandengineering.com
 www.mellandengineering.com
 P.O. Box 841, McPherson, KS 67460

Your business card ad
 Could be right here
 For only \$90/year

Your business card ad
 Could be right here
 For only \$90/year

Kansas Geological Foundation Video / DVD Collection

The KGF has an extensive collection of videos available for check-out at no charge.

Only pay for shipping back.

These are ideal for classroom or general public viewing.

See the web for titles & descriptions
www.kgfoundation.org

Call 316-265-8676

Ask for Janice to check out videos

We Invite You To join

Kansas Geological Foundation

*\$50.00 membership is
tax deductible*

Call 316-265-8676

*Or send checks to:
Kansas Geological Foundation
212 N. Market, Ste. 100
Wichita, KS 67202*

NOTICE!!!!

WSU GEOLOGY CLUB & Papa John's Pizza

Papa John's offered WSU student organizations an opportunity to raise monies for their organizations.

The **WSU Geology Club** is participating
And **YOU** can help them!

When ordering pizza from Papa John's,
Use this code: **WSU004**
(those are zero's, not letter O)

With this code, the customer will receive 40% off their entire online order and WSU's AAPG Student Chapter will receive 10% of the money spent on the order.

**Eating pizza tonight?
Let's help WSU Geology Club!**

Monies raised will be used towards gas money to travel to local schools when they promote the geosciences to grade schools, registration costs for workshops, seminars and AAPG Student Expos, and social and academic events like an upcoming "Lunch and Learn" series next fall.

The Following Are For Sale

Kansas Completion Cards:
Several sets (call for more information)

Oklahoma Completion Cards

New Mexico Completion Cards

North Dakota Completion Cards

Utah Completion Cards

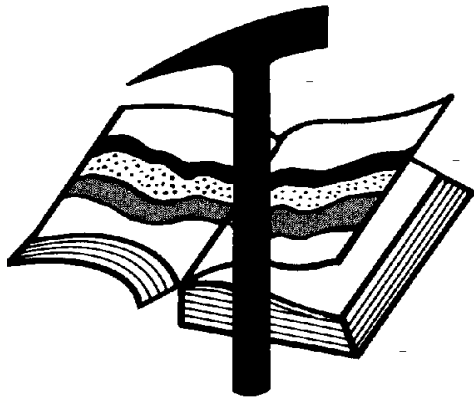
Microfiche Electric Logs

*Kansas
Oklahoma
Texas*

Geological Office Furniture:

- 8-drawer completion card cabinets
- 7-drawer cabinets
- Map cabinets—metal—2 available
- Map racks—different sizes

Call: 316-265-8676
Ask for Ted



Kansas Geological Foundation

Web Site: www.kgfoundation.org

**212 North Market
Wichita, Kansas 67202**

A not-for-profit educational and scientific corporation

GOALS:

- promote geology and earth science
- preserve geological records
- establish memorials and endowments
- support field trips and seminars
- financial aid and grants to students

PLEASE HELP SUPPORT THE FOUNDATION

Kansas Geological Foundation Services

The Kansas Geological Foundation provides the following services as a part of the organization's commitment to educate the public regarding earth science.

Speaker's Bureau

A list of speakers available to talk about various aspects of geology may be obtained by contacting Janice Bright at the KGS Library, 265-8676. This service is free to the public.

DVD/Videotape Library

The KGF maintains a DVD & videotape library focused primarily on the various fields of earth science. These tapes may be checked out without charge by the public. To obtain a list of tapes, please contact the KGS Library, 212 N. Market, Ste. 100, Wichita, KS 67202, or call Janice Bright at 265-8676.

The Kansas Geological Foundation was founded in March, 1989 as a not-for-profit corporation under the guidelines of section 501(c)(3) of the tax code to provide individuals and corporations the opportunity to further the science of geology. It is dedicated to providing charitable, scientific, literary and educational opportunities in the field of geology for the professional geologist as well as the general public.

KGF can receive in-kind donations through which the donor may receive a tax deduction. Of equal importance, the KGF provides the financial resources to sort, process and file this data at the KGS library. If you have a donation to make, please contact the KGF at 265-8676.

Your tax-deductible membership donation helps to defray the cost of processing donations and to support public education programs about the science of geology. Annual membership begins at \$50.00 per year. Donations of \$100.00 or more are encouraged through the following clubs:

Century Club	\$ 100 to \$ 499
\$500 Club	\$ 500 to \$ 999
Millennium Club	\$1000 to \$5000
President's Club	\$5000 and over

Kansas Geological Foundation

Cornerstone

Kansas Geological Foundation News

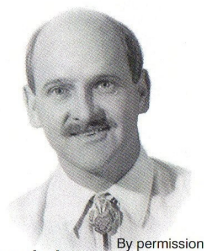
Spring 2018 Scholarship Recipients

Ryan Keast	Kansas State University	(Knighton Family Scholarship)	\$500
Nin Atae	Kansas State University	(Bob Cowdery Scholarship)	\$500
Mikaela Rader	Kansas State University	(Bob Cowdery Scholarship)	\$500
Trevor Spencer	Kansas State University	KGF Scholarship	\$500
William Swanson	Wichita State University	KGF Scholarship	\$500
Andrew Banks	University of Kansas	KGF Scholarship	\$500
Chantelle Davis	University of Kansas	KGF Scholarship	\$500
Jeffery Jennings	University of Kansas	KGF Scholarship	\$500
Mathew Kramer	University of Kansas	KGF Scholarship	\$500
Ajay Pradhan	University of Kansas	KGF Scholarship	\$500

Grant Request Recipients

Andrew Swindle - " <i>Ninnescah Field Station Hydrogeologic Assessment</i> "	\$727.25
Rogers Clark Caldwell Buntin - " <i>Evaluating the Ichnofossil Teredolites as an indicator of Salinity and Paleoenvironment in the geologic record. Examples from Cretaceous strata: Kansas, Colorado and Utah.</i> "	\$500.00
Christina Richardson - " <i>Effect of Local Soil on Microbial Communities on Aquifer Microbial Communities and Geochemical Environments</i> "	\$500.00

The Kansas Geological Foundation Needs You!



The KGF provides the financial resources to sort, process and file, in-kind donations of geological data at the KGS library. Due in large part to the KGF this unique and rare well of information is being made available to all. Please consider telling your company management and colleagues about the benefits of a library that continues expanding in part because of the KGF.

We very much value and need your financial support.

KGF Officers and Board Members

President- Larry Richardson
Vice President - Dennis Hedke
Treasurer - Bryce Bidleman
Secretary - Larry Friend

Board Members

Ernie Morrison
Marc Summerville (Grants)
Brian Fisher (Membership)
Ken Leblanc
Ken Wallace

Scholarships - Maurice Korphage
Publicity - Wes Hansen

Kansas Geological Foundation News

Students: The KGF awards scholarships each December and May. Check with your department chairs for applications. You must submit complete applications by the deadline.

Scholarship Applications for the Fall semester will be due by May 1, 2018.

Grants to help with research on Kansas related geology are also considered for aid.

Currently, the Foundation has four students working on well log integration: Kyle Lawson, Helen Cruz, Shuyao Li (a.k.a. Emily) and David Bruce. They work between ten and thirty hours per week. More than a dozen other part-time integrators have worked on the project since 2010.

KGF President, Larry Richardson, presented Ted Jochems (L) and M. L. Korphage with distinguished service awards for their service to the KGF. Ted was awarded for his continuing service to the KGF data integration project and Mr. Korphage for his continuing service in the KGF scholarship application process. Also receiving this award were Monica Williams for her work with KGF grants and David Doyel for his fund raising efforts for the KGF integration project.



12 Drilling Rigs
To depth of 8,500 ft.



WESTERN KANSAS
SOUTHERN NEBRASKA
EASTERN COLORADO

For contract information contact:
Will Murfin
Drilling Manager

316-258-8888 (Direct)
316-267-3241 (Main)

250 N. Water, Ste. 300
Wichita, KS 67202

DRILLING COMPANY

ROTARY DRILLING CONTRACTOR

620 Hubbard PO Box 823
 Great Bend, KS 67530
 Phone 620-793-8366

100 S. Main, Ste. 410,
 Wichita, KS 67202
 Phone 316-267-1331
 Fax 316-267-5180

2D & 3D Vibroseis Acquisition
ARAM*AIRES Seismic Recording System

1600 Broadway, Suite 1660 • Denver, CO 80202-4915
 (303) 592-5220 • info@lockhartgeo.com
 for complete information go to: www.lockhartgeo.com

Great Bend (620) 793-5861 Ness City (785) 798-3843 Medicine Lodge (620) 886-5926

GREAT BEND 793-5861 NESS CITY 798-3843
MEDICINE LODGE 886-5926

Russell (785) 483-2627 Oakley (785) 672-3452

AAPG Needs You!
Professional geoscientists, share your world!

The Mid Continent Section has **17 AAPG Student Chapters**, but only **3 Visiting Geoscientists**...which makes it almost impossible to have a professional geoscientist visit to each school at least once a year or even once every two years. The aim of AAPG's program is to give students a flavor of a professional life in energy resources. It also hopes to encourage dialog between industry and academia.

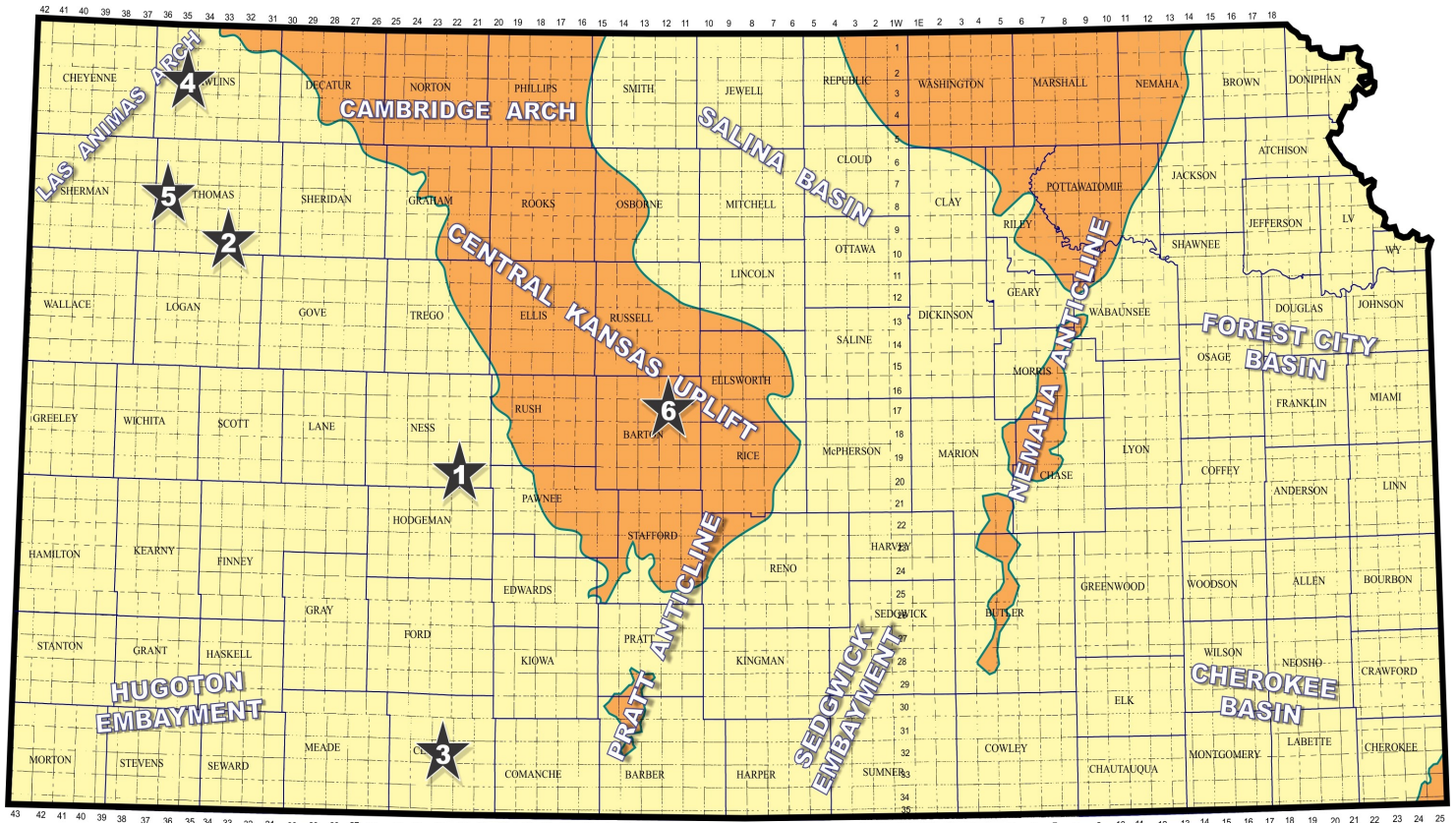
To be a Visiting Geoscientist bearing the AAPG flag, you are asked to have at least 5 years of experience and make at least one visit per year to a university. It can be a school with an AAPG Student Chapter, or a college/university without one. Your choice.

The Mid Continent schools with Student Chapters are: Missouri University, Fort Hays State University, Iowa State University, Kansas State University, Missouri State University, University of Nebraska, Northwest Missouri State University, Oklahoma State University, University of Oklahoma, University of Arkansas, University of Iowa, University of Kansas, University of Missouri, Columbia University of Tulsa and Wichita State University.

Contact Robbie Gries, co-Chair VGP committee, Denver, if you are interested in learning more. rrgries@aol.com

Exploration Highlights

By John H. Morrison, III
Independent Oil & Gas



Map courtesy of Marc Summerville

1.) American Warrior, Inc., Garden City (KS), has discovered Mississippian oil reserves at the #1-25 KT (API 15-135-25978) in the NE/4 of section 25- T20s- R22W, in southeastern Ness County. The Mount Carmel Southwest pool opener was drilled to a total depth of 4336 ft by Discovery Drilling tools about eleven miles south of Bazine, KS. Production information is being held confidential. Well location lies about one mile from established Mississippian oil production in the Mount Carmel Field, where seven wells have produced nearly 600,000 bbls of crude oil from around 4350-4400 ft in depth since its discovery in 1966 by Vaughan Drilling Company.

2.) Elk Energy Holdings LLC, Wichita (KS), is producing an undisclosed amount of oil from the Lansing - Kansas City (LKC) formation at the #1-14 Lippelmann (API 15- 193-20998), NW/4 of section 14- T10s- R33W, in Thomas County. The infield discovery well is spotted over one-half mile southwest of four established wells in the Spica Field drilled by O'Brien Resources, Inc. O'Brien discovered the field in 2010. The Spica Field has produced over 32,000 bbls of crude oil from the LKC, Cherokee and Morrow formations. Field area is located about five miles north and two miles east of the town of Monument.

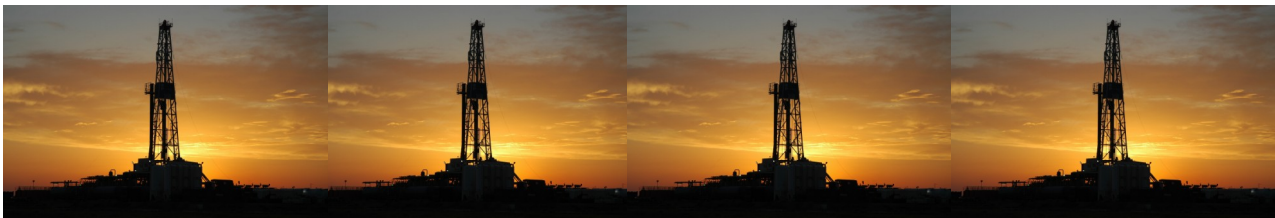
3.) Mull Drilling Company, Inc., Wichita (KS), has successfully completed a remote wildcat well in Clark County. The #1-10 Bouziden Unit (API 15-025-21596), NE/4 of section 10- T32s- R23W, is producing an unknown amount of oil from the Lansing - Kansas City (LKC) formation at site located over four miles north of other proven LKC production in the area in the multi-pay Ashland Field (1951). Duke Drilling tools

drilled the well at a total depth of 5417 ft by logger's measurements. Production details remain confidential. The new Big Bear Creek oil field is situated about five miles north and 2 miles west of the city of Ashland.

4.) Murfin Drilling Company, Inc., Wichita (KS), has completed a remote wildcat well about one mile south and 3 miles west of the town of Beardsley to establish the Beeson Northeast oil field. The #1-17 CWA 'E' (API 15-153-21200) was drilled in the NW/4 of section 17- T3s- R35W to a total depth of 4900 ft. Production comes from the Lansing-Kansas City formation. The well lies nearly one mile northeast of abandoned LKC and Marmaton production in the one-well Beeson Field (1962-1999) and is slightly over two miles southeast of the active Loker Field (2014) which produces oil from the LKC, Marmaton and Cherokee formations. Murfin has produced almost 20,000 bbls oil from the Loker Field which they also discovered.

5.) VAL Energy, Inc., Wichita (KS), has completed its #1-3 Wilson (API 15-193-21003) wildcat well to establish a new oil producing area in Thomas County. Operator drilled the well in the SW/4 of section 3- T8s - R36W, utilizing rotary tools provided by WW Drilling. Total depth was obtained at 4850 ft. The producing formation is Cherokee. Wellsite is located nearly two miles southwest of another VAL Energy discovery made in 2013 that established the Schroeder Northwest Field. VAL has completed four wells in the field that have produced nearly 35,000 bbls of crude oil from the Marmaton and Cherokee formations. VAL's latest discovery on the Wilson lease is located about one mile north and two miles east of the town of Brewster.

6.) RJM Company, Claflin (KS), is producing commingled crude oil from the Lansing - Kansas City and Arbuckle formations at the #1 Doctor Gerald (API 15-009-26188), NE/4 of section 25- T17s- R12W, in Barton County. The wildcat well found new reserves nearly three-quarters mile south of active Beran Field (1962) where similar oil pays exist. The well was drilled by Southwind Drilling tools to a total depth of 3440 ft. No completion information has been released. Field area lies about two miles north and three miles west of Claflin, KS. The new oil field has been named Beran South.



Kansas Geological Foundation Memorials

KGS Member	Date Deceased	Memorial Est.	KGS Member	Date Deceased	Memorial Est.
Dan Bowles	09/89	1990	Claud Sheats	02/02	2002
John Brewer	10/89	1990	Merle Britting	2002	2002
George Bruce	08/89	1990	Harold Trapp	11/02	2002
Robert Gebhart	01/90	1990	Donald M. Brown	11/02	2003
Ray Anderson, Jr.	11/90	1990	Elwyn Nagel	03/03	2003
Harold McNeil	03/91	1991	Robert Noll	09/03	2003
Millard W. Smith	08/91	1991	Benny Singleton	09/03	2003
Clinton Engstrand	09/91	1991	Jay Dirks	2003	2003
M.F. "Ted" Bear	10/91	1991	J. Mark Richardson	02/04	2004
James & Kathryn Gould	11/91	1991	John "Jack" Barwick	02/01	2004
E. Gail Carpenter	06/91	1993	Richard Roby	03/04	2004
Benton Brooks	09/92	1992	Ruth Bell Steinberg	2004	2004
Robert C. Armstrong	01/93	1993	Gordon Keen	03/04	2004
Nancy Lorenz	02/93	1993	Lloyd Tarrant	05/04	2004
Norman R. Stewart	07/93	1993	Robert J. "Rob" Dietterich	08/96	2004
Robert W. Watchous	12/93	1993	Mervyn Mace	12/04	2004
J. George Klein	07/94	1994	Donald Hoy Smith	04/05	2005
Harold C.J. Terhune	01/95	1995	Richard M. Foley	06/05	2005
Carl Todd	01/95	1995	Wayne Brinegar	06/05	2005
Don R. Pate	03/95	1995	Charles B. Moore	09/96	2005
R. James Gear	05/95	1995	Jack Heathman	05/06	2006
Vernon Hess	06/95	1995	Charles Kaiser	09/06	2006
E. K. Edmiston	06/95	1995	Rod Sweetman	08/06	2006
Jack Rine	07/95	1995	Karl Becker	10/06	2006
Lee Cornell	08/95	1995	Frank Hamlin	10/06	2006
John Graves	10/95	1995	Marvin Douglas	12/06	2006
Wilson Rains	10/95	1995	Robert W. Hammond	04/07	2007
Heber Beardmore, Jr.	09/96	1996	Eldon Frazey	04/07	2007
Elmer "Lucky" Opfer	12/96	1996	Pete Amstutz	05/07	2007
Raymond M. Goodin	01/97	1997	Charles Spradlin	05/07	2007
Donald F. Moore	10/92	1997	Donald R. "Bob" Douglass	09/07	2007
Gerald J. Kathol	03/97	1997	Vincent Hiebsch	11/07	2007
James D. Davies	08/88	1997	Glen C. Thrasher	03/08	2008
R. Kenneth Smith	04/97	1997	Peg Walters	06/08	2008
Robert L. Dilts	05/97	1997	Theodore "Ted" Sandberg	07/08	2008
Delmer L. Powers	06/72	1997	James Ralstin	11/08	2008
Gene Falkowski	11/97	1997	Earl Brandt	04/09	2009
Arthur (Bill) Jacques	01/98	1998	Walter DeLozier	05/09	2009
Bus Woods	01/98	1998	Don D. Strong	01/10	2010
Frank M. Brooks	03/98	1998	John Stone	02/10	2010
Robert F. Walters	04/98	1998	Craig Caulk	03/10	2010
Stephen Powell	04/98	1998	Joseph E. Moreland, Jr.	03/10	2010
Deane Jirrels	05/98	1998	Gene Garmon	03/10	2010
William G. Iversen	07/98	1998	James F. Dilts	05/10	2010
Ann E. Watchous	08/98	1998	Jerry Pike	05/10	2010
W.R. "Bill" Murfin	09/98	1998	Donald Hollar	06/10	2010
Donald L. Hellar	11/98	1998	Delbert Costa	08/10	2010
Joseph E. Rakaskas	01/99	1999	John Tanner	08/10	2010
Charles W. Steincamp	02/99	1999	William (Bill) Owen	09/10	2010
Robert and Betty Glover	10/96	1998	Harold (Hal) Brown	10/10	2010
Howard E. Schwerdtfeger	11/98	1999	Edmund G. Lorenz	11/10	2010
W. W. "Brick" Wakefield	03/99	1999	Thomas E. Black	05/11	2011
V. Richard Hoover	01/00	2000	Wayne E. Walcher	07/11	2011
Warren E. Tomlinson	01/00	2000	Henry F. Filson	07/11	2011
James A. Morris	01/00	2000	Thomas Ray	07/11	2011
Eric H. Jager	03/00	2000	Edgar E. Smith	09/11	2012
Kenneth W. Johnson	03/00	2000	Marilyn Messenger	06/13	2013
Dean C. Schaake	03/00	2000	Micheal Mitchell	09/13	2013
Fred S. Lillibridge	05/00	2000	Orvie Howell	11/13	2013
Jerry A. Langrehr	07/00	2000	James Thompson	11/13	2013
Clark A. Roach	07/00	2000	Dick Rowland	09/13	2014
Floyd W. "Bud" Mallonee	10/00	2000	Robbie Thompson	12/13	2014
Ralph W. Ruuwe	09/00	2000	Kris Kennedy	04/14	2015
Robert L. Slamal	02/01	2001	Annette Hedke	02/15	2015
Jerold E. Jespersen	06/01	2001	James Devlin	04/15	2015
William A. Sladek	06/01	2001	Robert Gensch	09/15	2015
Harlan B. Dixon	06/01	2001	Jerald Rains	05/16	2016
Edward B. Donnelly	08/01	2001	Max Houston	05/16	2016
Richard P. Nixon	02/02	2002	Robert "Gus" Messenger	01/17	2017
Robert W. Frensley	12/01	2002	Jimmy Wayne Gowens	04/17	2017
Gerald W. Zorger	01/02	2002	Walter H. Martz Jr.	01/18	2018
Don L. Calvin	03/02	2002			

CHANGE SERVICE REQUESTED

KGS BULLETIN
 March-April 2018

March 2018

Sun	Mon	Tue	Wed	Thu	Fri	Sat
				1	2	3
4	5	6 Tech Meeting	7	8	9	10
11	12	13 KGS Board	14	15	16	17
18	19	20 Tech Meeting	21 KGF Board	22	23	24
25	26	27	28	29	30	31
April 2018						

Sun	Mon	Tue	Wed	Thu	Fri	Sat
1	2	3 Tech Meeting	4	5	6	7
8	9	10 KGS Board	11	12	13	14
15	16	17 Tech Meeting	18 KGF Board	19	20	21
22	23	24	25	26	27	28
29	30					